

MAXWELL + PINBOROUGH

WELCOME:

MAXWELL PINBOROUGH design & produce, bespoke, furniture & interiors from our East London premises.
Created in 2001 by, designer, Stephen Maxwell & cabinet-maker, Andrew Pinborough.

COMMISSIONS:

We either receive commissions directly from private clients searching for unique contemporary solutions to their furniture & interior requirements or by other architects & designers searching for a reliable manufacturer of their bespoke furniture & interior concepts.

Commissions range from a single furniture piece to complete renovation projects including kitchens, bedrooms & bathrooms. We design & manufacture from sketch conception through to completion incorporating our in-house cabinet makers and on-site contractors.

From initial contact we would arrange a site visit to discuss the project requirements. Following the initial meeting we provide and outline design proposal with budget costs.





Project Name:
Tynemouth Street

Type:
Victorian terrace House refurbished with side kitchen extension.

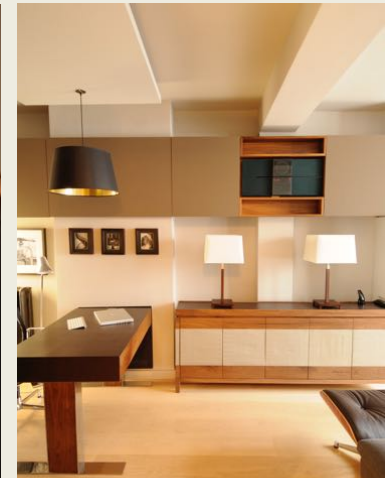
Kitchen units in white gloss lacquered MDF with dining furniture & seating in walnut & leather. Living area with wall mounted TV & AV cabinets below

Office area with walnut storage units & open shelving.

Bathrooms & shower rooms clad in Corian & Quartz Zodiac wall panels.

Design:
Maxwell Pinborough









Project Name:
Brunswick Road

Type:
House renovation
Complete property renovation incorporating Walk-in
Wardrobe, Cloakroom with concealed WC, dining room with
Walnut shelving & Oak library Shelving.

Design:
Furniture designed by Maxwell Pinborough with the main
refurbishment & extension designed by Greig Ling
architects

Materials:
Oak, Walnut, colour lacquered MDF.



















































Project Name:
Eleanor Road

Type:
House renovation

Design:
Furniture designed by Maxwell Pinborough with the
main refurbishment & extension designed by Greig Ling
architects

Materials:
Oak, Corian & colour lacquered MDF





Project Name:
Homefield Road

Type:
Kitchen

Design:
Kitchen design and the
main refurbishment &
extension designed by Sti
& Trevillion architects

Materials:
Sanded Oak, Concrete
worktops with Antique
effect brass splashbacks.







Project Name:
Homefield Road

Type:
Kitchen

Design:
Kitchen design and the
main refurbishment &
extension designed by Sti
& Trevillion architects

Materials:
Sandblasted Oak, Concrete
worktops with Antique
effect brass splashbacks.

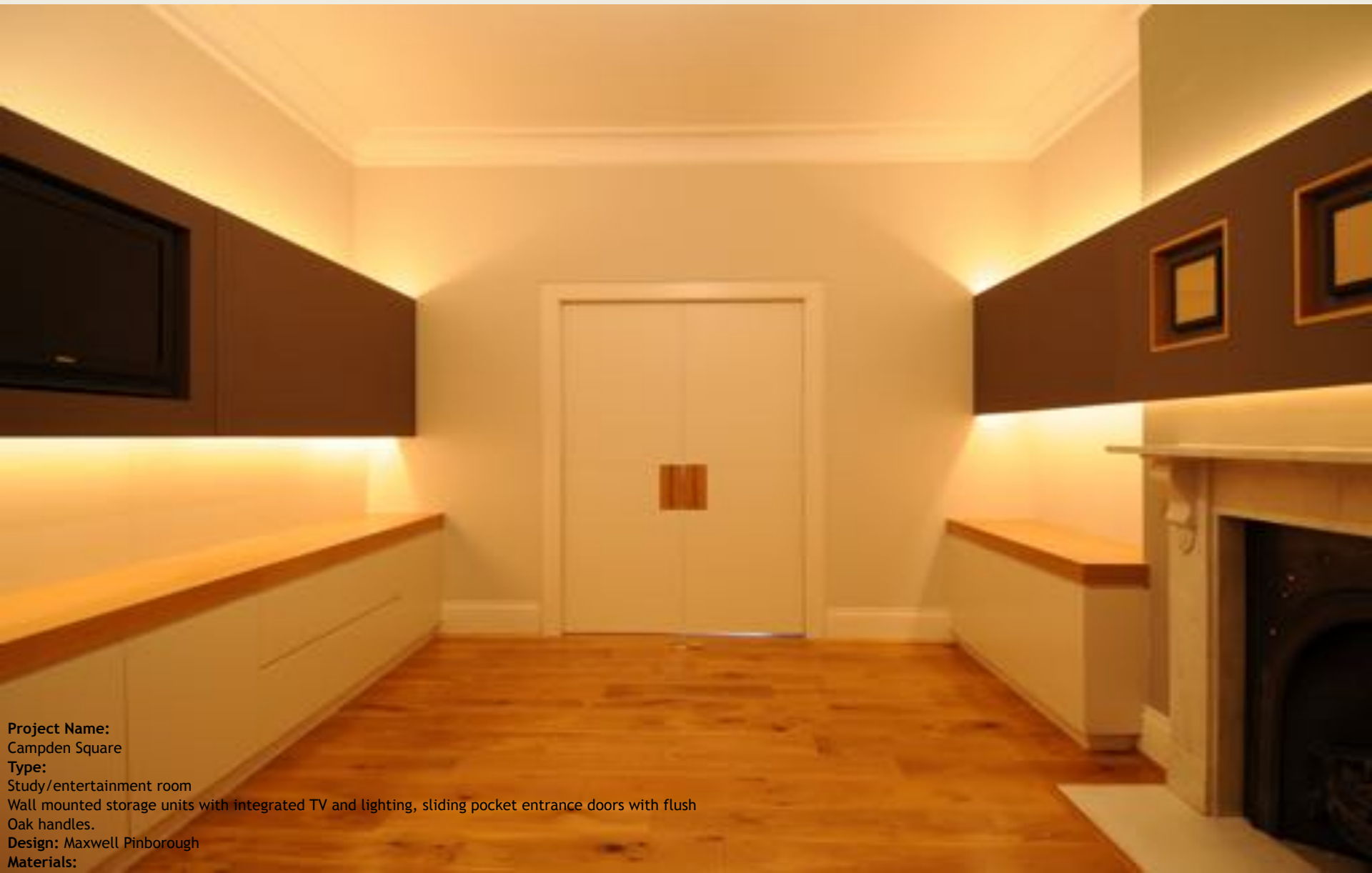


Project Name:
Homefield Road

Type:
Kitchen

Design:
Kitchen design and the
main refurbishment &
extension designed by Stiri
& Trevillion architects

Materials:
Sandblasted Oak, Concrete
worktops with Antique
effect brass splashbacks.



Project Name:
Campden Square
Type:
Study/entertainment room
Wall mounted storage units with integrated TV and lighting, sliding pocket entrance doors with flush
Oak handles.
Design: Maxwell Pinborough
Materials:





Project Name:
Perrymead

Type:
Kitchen, Living room & family room

Large open kitchen with fully integrated appliances incorporating island unit with breakfast bar,
living room with Oak shelving/base units & sliding doors to conceal TV.
Basement family room with touch screen & concealed speakers.

Design:
Maxwell pinborough





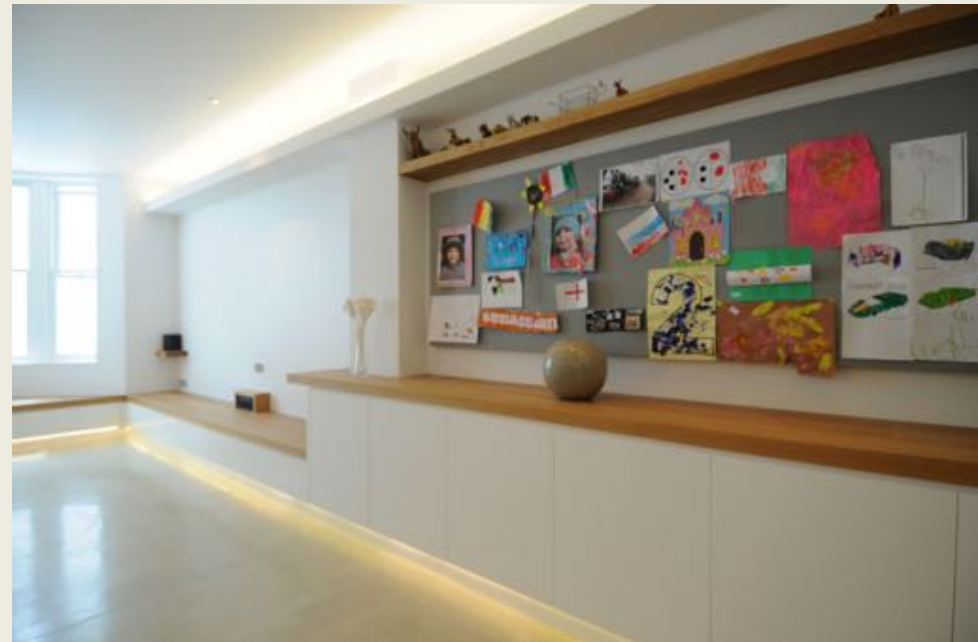
Project Name:
Florance Road

Type:
Kitchen

kitchen with horizontal walnut veneered panels and stainless steel worktops.

Design:
Maxwell pinborough





Project Name:
Westbourne Park Road

Type: Rear door joinery, Kitchen Alcove units & Basement family room

Large Oak external doors & walk-in larder cabinet, marble & stainless steel worktops. Basement family room with high capacity storage cabinets, shelving with concealed alcove & plinth lighting.

Design: Maxwell Pinborough

Materials:
Oak, concrete, stainless steel





Project Name:

Campden Hill

Type:

En-suite Bathroom

Through sliding pocket doors we have

created a marble clad en-suite

bathroom & further guest bathroom.

Materials:

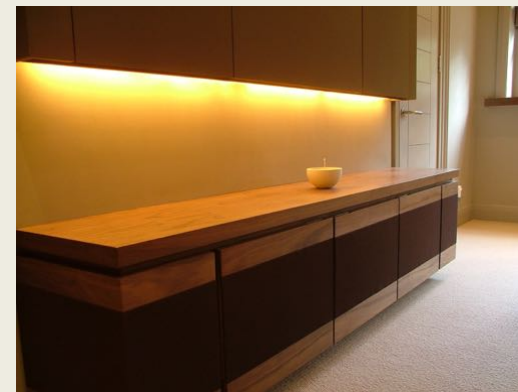
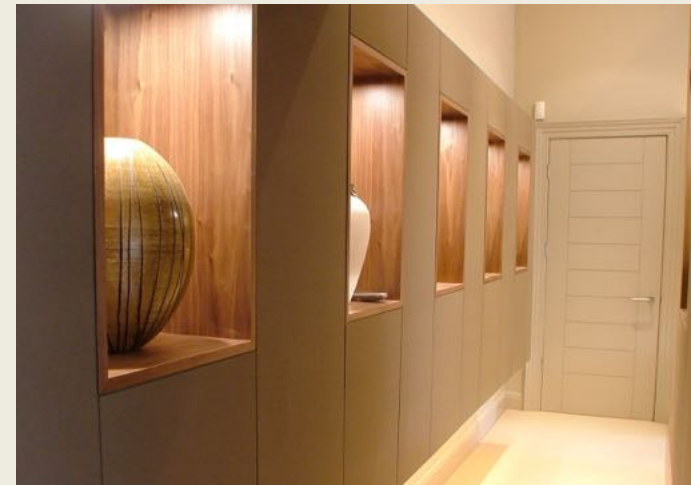
Oak, Nextel Suede textured lacquer,
marble.





Project Name:
Chevening Road
Type:
Kitchen/dining room
Corian worktop with integrated hob and controls,
Glass splashback, solid beech drawers and cutlery
trays. Walnut alcove storage cabinets with TV &
audio-visual cabinet, wine cooler & open bottle rack.

Materials:
Corian, back painted glass, walnut, white lacquered
MDF doors & drawer fronts.



Project Name:
Cambalt Road
Type:
2No. Bedrooms
Main bedroom with framed bed-head & fabric panels. At the foot of the bed we have a wall mounted TV display & audio visual cabinet. Behind the bed features a walk in wardrobe & along the adjoining wall are storage cabinets with open display niches. Integrated lighting is used extensively to dramatic effect.
Design:
Maxwell Pinborough
Materials:
Walnut timber Nextel suede finish lacquered panels



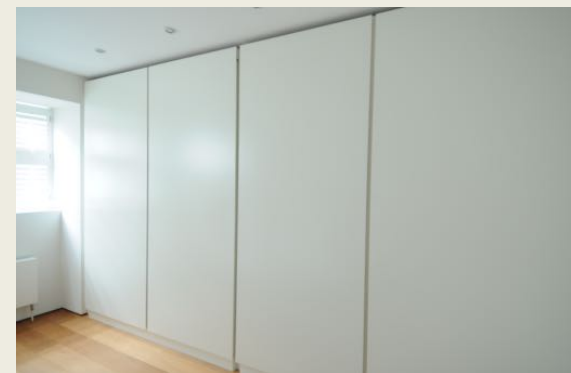
Project Name:
Flask Walk

Type:
Dining Table, Living room, Study, hobby room,
drinks bar & wardrobe storage
Oak framed dining table & bench, Leather
topped desk with magnetic backboard & built-
in storage. Freestanding DJ unit & storage for
CD/record collection. Bar area with sliding
panel door, integrated lighting & built-in wine
chillers. Leather clad wall storage drawers &
box shelving above. Wardrobe with integrated
door storage compartments.

Design: Maxwell Pinborough

Materials:
Oak, glass, leather, Walnut & brushed steel







Project Name:
Marlborough Place

Type:
Kitchen, stairs & bathroom

Kitchen produced with Island combining industrial stainless steel & solid Teak timber.

Teak clad W.C. with resin poured flooring.
Walnut clad open stair treads with "barbed wire" sandblasted etched motif.

Design:
Precious McBane





Project Name: Randolph Crescent

Type: Apartment

Complete property renovation with bleached Oak floor & furniture incorporating Main bedroom, Walk-in Wardrobe, two Bathrooms, Living room, Kitchen, Hall & Study.

Design:

Interior Architect -Shideh Shaygan

Materials:

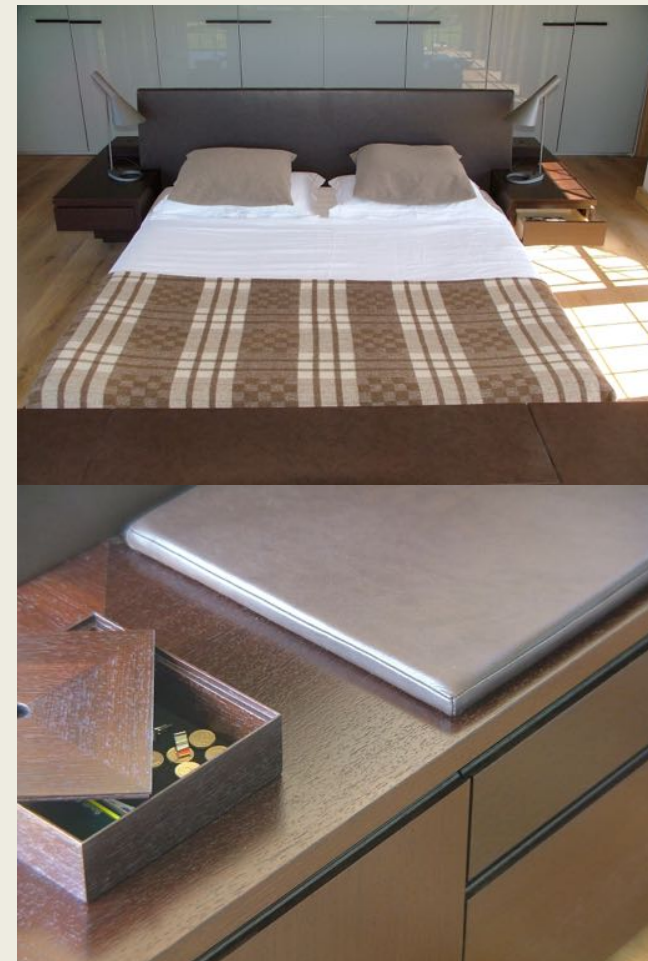
Oak Floor & furniture

Marble tiles

Stainless steel







Project Name:

Willinghurst

Type:

Bedroom

The central piece of a bedroom framed by floor to ceiling glazed walls the bed features a seating area with drawer & cabinet storage, super king bed with integrated bedside table. At the foot of the bed sits a slim line TV media cabinet with remote lift up TV panel & storage.

Materials:

Wenge

Dark leather





Type:

Walk-in wardrobe

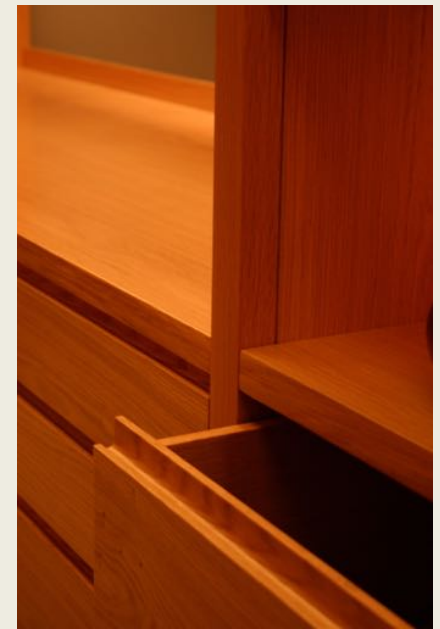
Located with-in the pitch of a roof void we created open hanging & drawers storage areas behind the cabinets in the eaves. The end wall features a full height mirror & the ceiling illuminates the room with a full run of glazed light box units.

Design:

Maxwell Pinborough

Materials:

Solid Oak & matching veneers, opaque glass





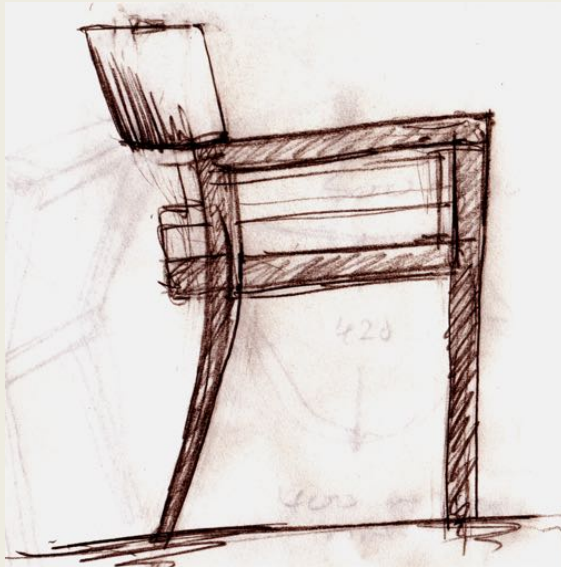


Type:
Walk-in wardrobe

Sketch studies for the
“Pulborough dining
chair” in Wenge &
leather.

“Pulborough dining
chair” in Wenge &
leather.

Design:
Maxwell Pinborough





Type:
Walk-in wardrobe

“Pulborough dining suite of 4m long table & 12 chairs
in Wenge & leather.

Design:
Maxwell Pinborough



Solid Oak floor to ceiling book shelf.
Design: Maxwell Pinborough



Walnut Wall panels & shelving with white
lacquered supports.
Design: Rafter Property.







Clockwise from top left:

Solid Oak credenza detail with slotted finger joints.
Design: Maxwell Pinborough

Credenza detail in Solid Walnut with book-matched veneered doors.
Design: Maxwell Pinborough

Walnut Hall console.
Design: Maxwell Pinborough

Wenge "Hot Shot Vase"
Design: Maxwell Pinborough

Our corporate clients
include:

Andrew Stafford
Anouska Hempel
Design
Better Construction
Blauel Architects
Bute Fabrics
DAAM Architects
Dive Architects
Gavin Turk
German Embassy UK
Gitta
Gschewndtner•
Greig Ling
Architects
Jonathan Clark
Architects
Michael Marriott
Native Design
Precious McBane
Rafter Property
Ringway
Construction
Rough Trade
Records
Samsung UK
Shideh Shaygan
Studio Ilse
Tonkin Liu Architects
Victoria & Albert
Museum
White Cube Gallery



